



MALBY LEARNING TRUST
Exceptional Experiences. Successful Lives.

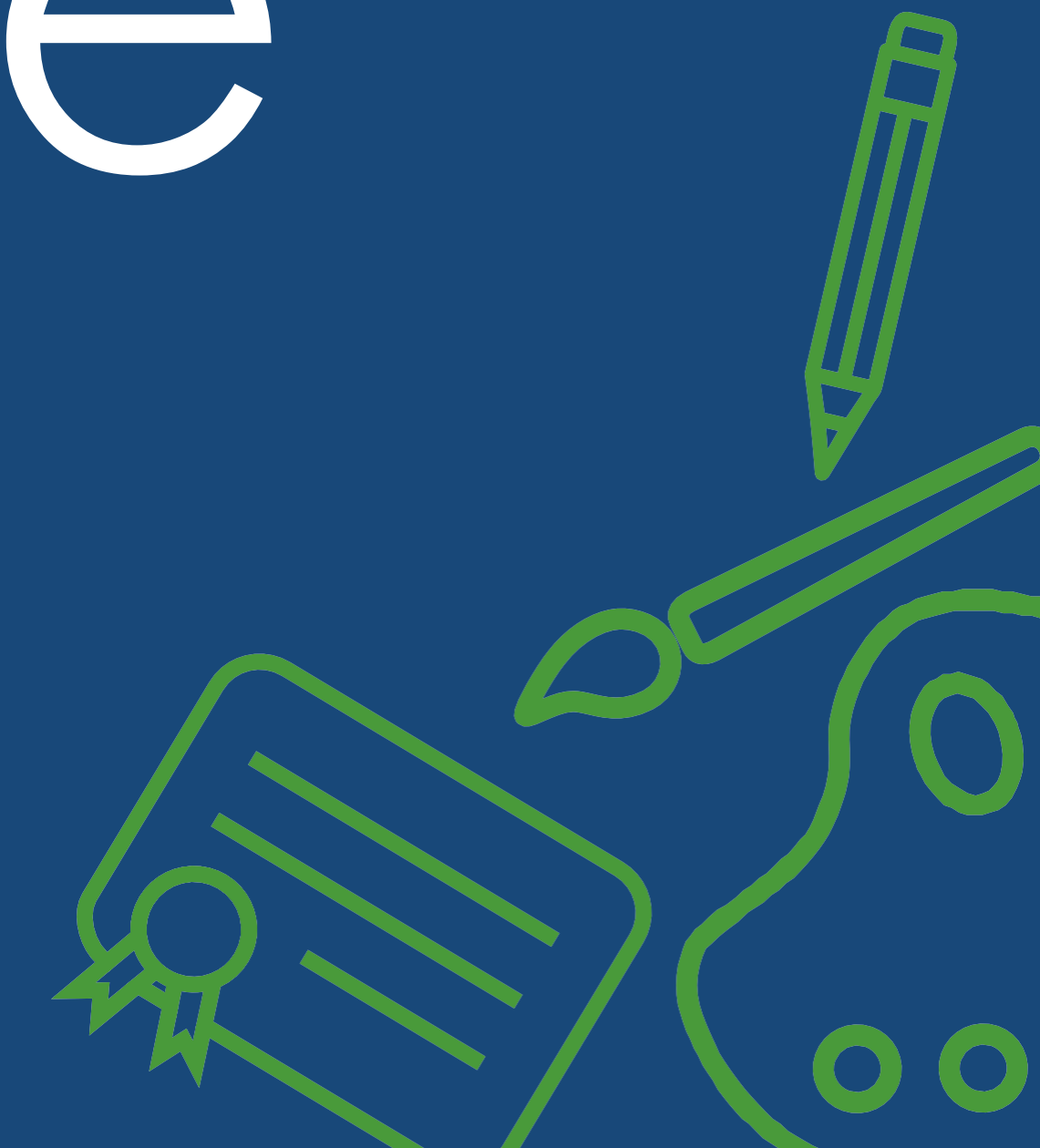
2025-26



Ravenfield Primary Academy



Welcome



School day (FS2-Y6)

8:35	Door open
8:45	Doors shut – registers taken
9am	Assembly
11am	Break time
Lunch times 11:45-12:45 – FS1/FS2 12:15 – 1:15 – Y1-Y6	
3:15pm	End of the school day



All about Mrs Rowbottom

My favourite subject is:
My favourite subjects are writing, reading, maths and art.

My favourite animal is:
My favourite animal is a dog. My daughter has a dog called Jasper and I love taking him for walks.

My favourite colour is:
All types of blue, especially like turquoise. It reminds me of the sea.

My hobbies and interests:
I like to relax reading a good book, meeting my friends and going for walks. I am interested in travelling and going to the theatre.

Interesting facts about me:
I am married with two children.
I enjoy listening to music and going to concerts.

Something I am looking forward to next year:
I am looking forward to meeting all the children in Kingfisher class and getting to know them and their families. We have lots of interesting topics planned for the year ahead. I cannot wait to share them with you.

Y2 expectations:

- Bring planners to school every day.
- PE days are: Monday and Friday. PE kits needed for all PE lessons.
- Read - three times a week and parents write in planners.
- TT Rockstars - three times a week.
- Spelling Shed - once a week, if your child is in Mrs Rowbottoms reading group.
- Reading books will be changed every Friday, so all reading books are new at school on this day.

Overview of learning

	Autumn 1	Autumn 2	Spring 1	Spring 2	Summer 1	Summer 2	
Writing (genres)	George and the Dragon - Narrative Conisbrough Castle - Recount Description of a Castle Place Value Addition	Song in the mist - Diary of a boy Why ghosts have long necks! - Narrative Subtraction Division	Description - How to be a lion Foam - How to be a lion Letter - Earth Day Multiplication Fractions	Butterflies - Non-fiction Report Diary - The storm aunts Shape Money	Instructions - How to make a fruit smoothie Narrative - The Great Fire of London Time Length/weight Mass, capacity Temperature	Clear the way The Great Fire of London When did seaside holidays first become popular?	
Maths (Key maths themes)			Animals including humans	Living things and their habitats			
Science					How white - Great fire of London be different if it happened today?		
History	Why is Conisbrough Castle so different to Boston Castle?		Who is the greatest explorer? Amelia Earhart and Ernest Shackleton				
Geography		Study an area of the UK (Scotland)		Are all countries the same?			
Design and Technology		East and West		Textiles Mechanics			
Art	Outcome - Castle picture Medium - Drawing/colours		Preparing fruit and vegetables Full Smoothie	Templates & joining Templates and joining techniques Butterfly Sewing	Wheels and Axles Making fire engines	Art - Window Outcome - Water Medium - painting - watercolour	
Computing	Technology around us Teach Computing Laptops	Digital Photography Teach Computing iPads		Making Music Teach Computing Laptops/iPads	Scratch Jr - Book Teach Computing iPads	Year 1 Diagrams Teach Computing iPads	
Music	West African call and response song (Theme: Animals)	Instruments (Musical storytelling)			Structure (Myths and legends)	Scratch Jr Robot Teach Computing iPads	
PSHE	The Caring Chest	Families and traditions	Health Lifestyles			Pinch (Visual art)	
RE	Autumn 1 - The story of Twinkl for Jewish and Christian people.	Autumn 2 - How do we say 'Thank you' for the Jewish and Christian people? What can we learn from stories of Christmas?	Spring 1 - Questions about the Easter story?	Spring 2 - What do children remember about the Easter story?	Summer 1 - Song for and about the Easter story?	Summer 2 - Jewish and Christian people	
PE	Ball skills Netball	Gymnastic Dance	Invitation Games Net and Wall Games		Drawing and Changing Spring 2 - What do children remember about the Easter story? Sewing and Receiving eggs	Summer 1 - Song for and about the Easter story? Summer 2 - Jewish and Christian people	

Visits and Exceptional Experiences

Visit	Date	Key information
Conisbrough Castle	25th September 2025	In school 8.35am Pick up time 3.15pm Cost: Approx £20
Boston Castle	2nd October 2025	In school 8.35am Pick up time 3.15pm Cost: Approx £20
Jungle Jo - Animals	January/February	Visitor to school Cost: Approx £10
The Tropical Butterfly House	March 2026	In school 8.35am Pick up time 3.15pm Cost: Approx £20
The Great Fire of London Visitor	April 2026	In school 8.35am Pick up time 3.15pm Cost: Approx £10
Seaside Trip	June/July 2026	Fetch your buckets and spades. In school 8.35am Pick up time 3.15pm Cost: Approx £30

Staffing

Year Group	Teacher	Support Staff
Nursery	Mrs Johnson	Miss Hebblethwaite Mrs Duckmanton
Reception	Miss Rodgers	
Y1	Miss Roberts	Mr Fletcher Mrs Eggleston/Miss Pearson
Y2	Mrs Rowbottom	
Y3	Mrs Milner/Mrs Martin	Mrs Charles
Y4	Miss Chantler	
Y5	Miss Phillips	Mrs Challinor
Y6	Miss Hanby	Mrs Sharpe – tutoring to start in October

Miss Scrivens will continue to support/cover across school as Cover Supervisor and HLTA.

Miss Pearson will cover on a Thursday and Friday (when necessary).

Mrs Prescott will continue to provide pastoral support and cover PPA on a Monday and Tuesday.

PE

Monday	Tuesday	Wednesday	Thursday	Friday
Y1	Y1	Y6	Y6	FS2
Y2	Y3	Y5	Y5	Y2
Y3		Y4		Y4

FS1 won't be doing 'PE'. So do not require a set day.

After School Clubs

Start 2nd
week
back!

Monday

Science Club

FS2 – Y6

Miss Phillips and Miss
Roberts

Tuesday

Sports Club

FS2 – Y6

Miss Chantler and Mr
Fletcher

Art and Outdoor Club

FS2 – Y6

Miss Chantler and Mr
Fletcher

Thursday

Performing Arts

Y3-Y6

Mrs Martin, Miss Hanby and
Mrs Johnson

Choir/Young Voices will run during Wednesday
lunchtimes (with Mrs Milner)

Attendance



At Ravenfield Primary Academy, and across the whole of Maltby Learning Trust, we firmly believe that there is a link between attendance and attainment.

It is an established fact that pupils with 95% plus attendance are more likely to achieve greater academic success - which in turn promotes greater pupil health and wellbeing.

**190 days
in the
standard
school year**

**175 days left
for family time
and holidays**



Reporting absences

Telephone: 01709 542678

Email: info@ravenfieldprimaryacademy.com

If you do require time off for your child, please use the following link to access our Leave of Absence form, <https://forms.office.com/e/ACyipq1J7M>

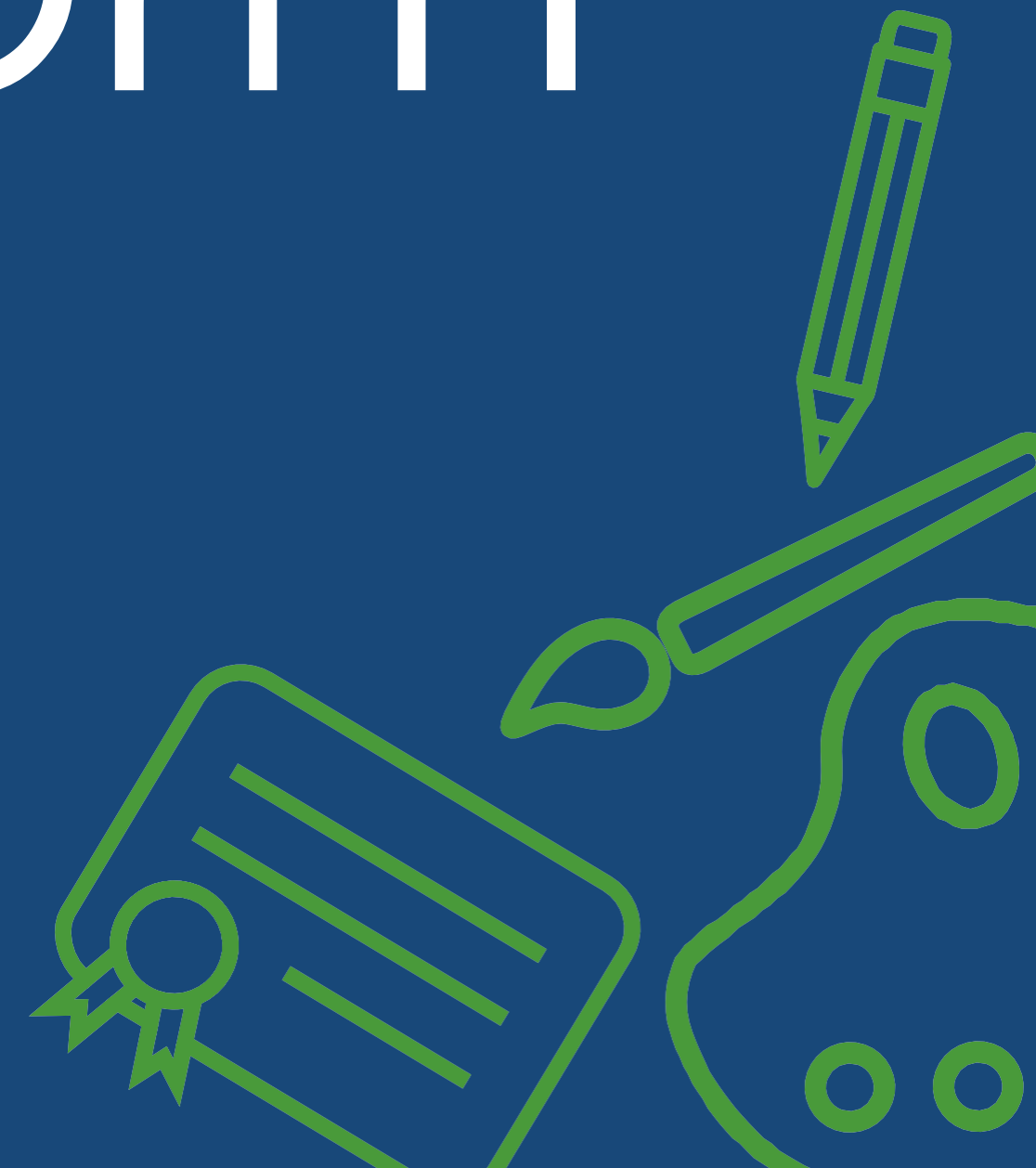
You can be fined for taking your child on holiday during term time without the school's permission.

Your local council can give each parent a fine of £60, which rises to £120 each if you do not pay within 21 days. If you do not pay the fine after 28 days you may be prosecuted for your child's absence from school.

If your child is late by 10 minutes every day over the school year, that's equal to over 5 days of lost learning!



School Uniform





GENERAL

Red Sweatshirt/Cardigan

White Shirt/White or Red Polo Shirt

Black/Grey Trousers

Black/Grey Dresses

Plain Flat Black Shoes

WINTER

Grey Trousers or skirt

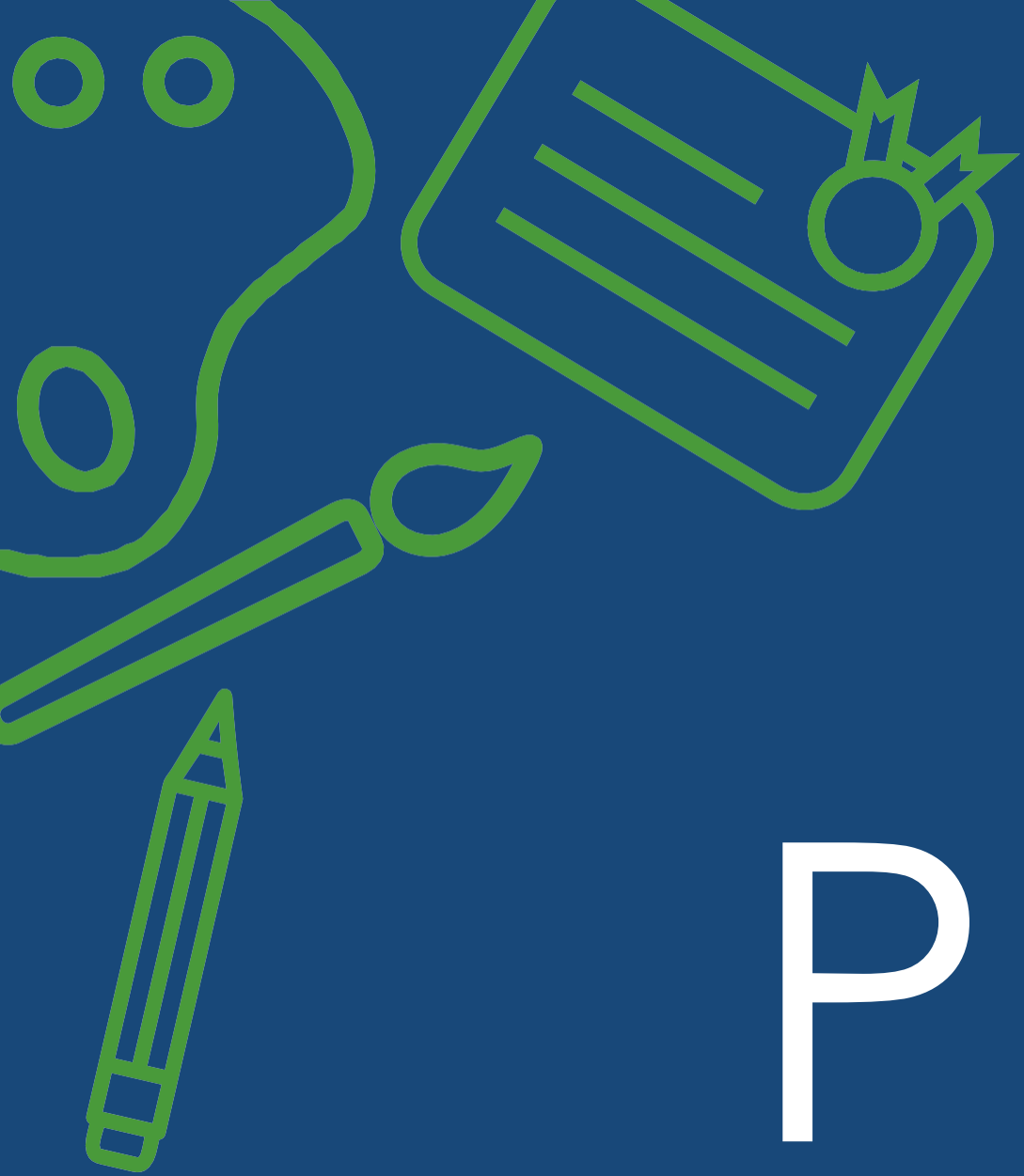
Dark socks/plain grey or black
tights

SUMMER

Tailored Shorts with dark socks

Red Gingham Dress with white
socks

Sandals with socks



PE standards



- White T-Shirt
 - Black/Navy Shorts
 - Pumps/Trainers
 - Dark Sweatshirt and Jogging Bottoms for Outdoor PE.
-
- Earrings – Must be removed. No longer allowed to tape.




 Ravenfield Primary Academy

Standards in PE

Children in Year 1 - 6 will have 2 PE lessons a week (please see your child's class story on Dojo for confirmation of days). One lesson, on a Monday, will be with Mrs White (PE teacher from MA) and the other lesson will be with your child's class teacher.

FS1 and FS2 children will have 1 lesson a week. Again, please see your child's class Dojo page for specific days.

PE is an essential part of the curriculum but can obviously come with some risks. Therefore, it is imperative that a strict PE kit and high expectations are implemented to keep everybody safe.

Kit

Children should come to school on their PE days wearing their full kit. Our full kit includes:

- White T-Shirt
- Black/Navy Shorts
- Suitable footwear (Pumps/Trainers)
- Dark (black or navy) Sweatshirt and Jogging Bottoms for Outdoor PE.

Borrowing kit is not always possible. Therefore, if your child does not have kit, they may not be able to participate in the lesson and therefore must go to another class.

Jewellery

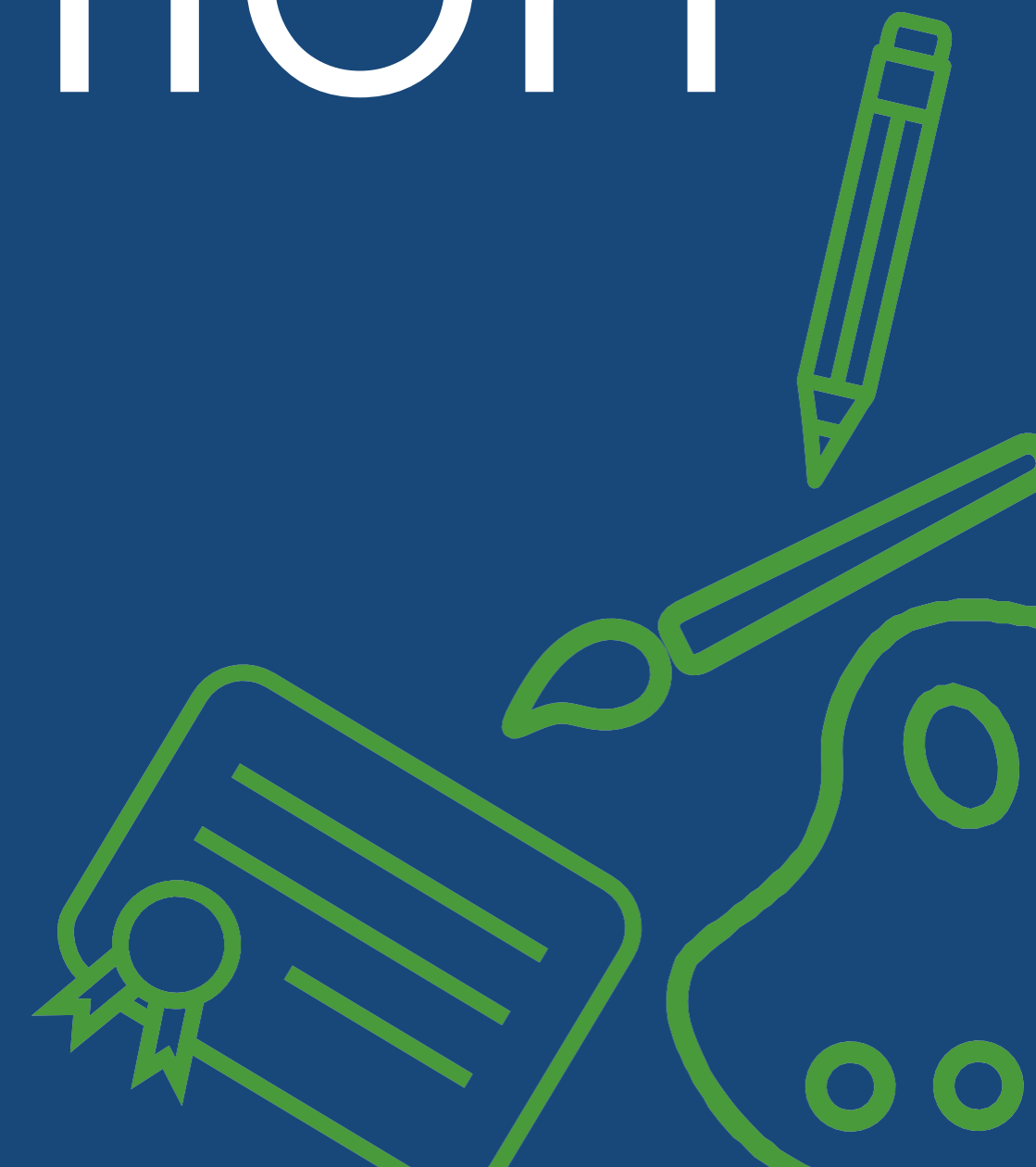
It is essential that all jewellery is removed prior to PE lessons. Unfortunately, we cannot put tape around earrings and adults cannot support children in remove earrings. Therefore, please ensure earrings are not worn on PE days.

Illness/injury

Please ensure all illnesses/injuries, that impact your child taking part in PE lessons, are reported to your child's class teacher.



Communication



1. Phone calls

2. SeeSaw

3. Email – info@

4. Letters

5. Website

6. Social media

We kindly remind all parents that communication should remain respectful and constructive. Any behaviour that is perceived as abusive, threatening, or inappropriate will be addressed in accordance with our Parent Code of Conduct.

Please also note that staff may not be able to respond to messages outside of core school hours (8:00am–6:00pm) or during school holidays. We appreciate your understanding and support in maintaining a positive and respectful school environment.

Wrap Around Care



WRAPAROUND CARE

AT RAVENFIELD PRIMARY ACADEMY!

In Partnership with The Fun Hub



Looking for flexible, fun, and reliable childcare?

Our exciting wraparound care programme offers a safe, engaging environment where children can play, learn, and make new friends – all right here at school!

✓ For children aged 5–11

🕒 Breakfast Club: 7:30 am – 8:30 am

🕒 After-school Club: 3:00 pm – 6:00 pm

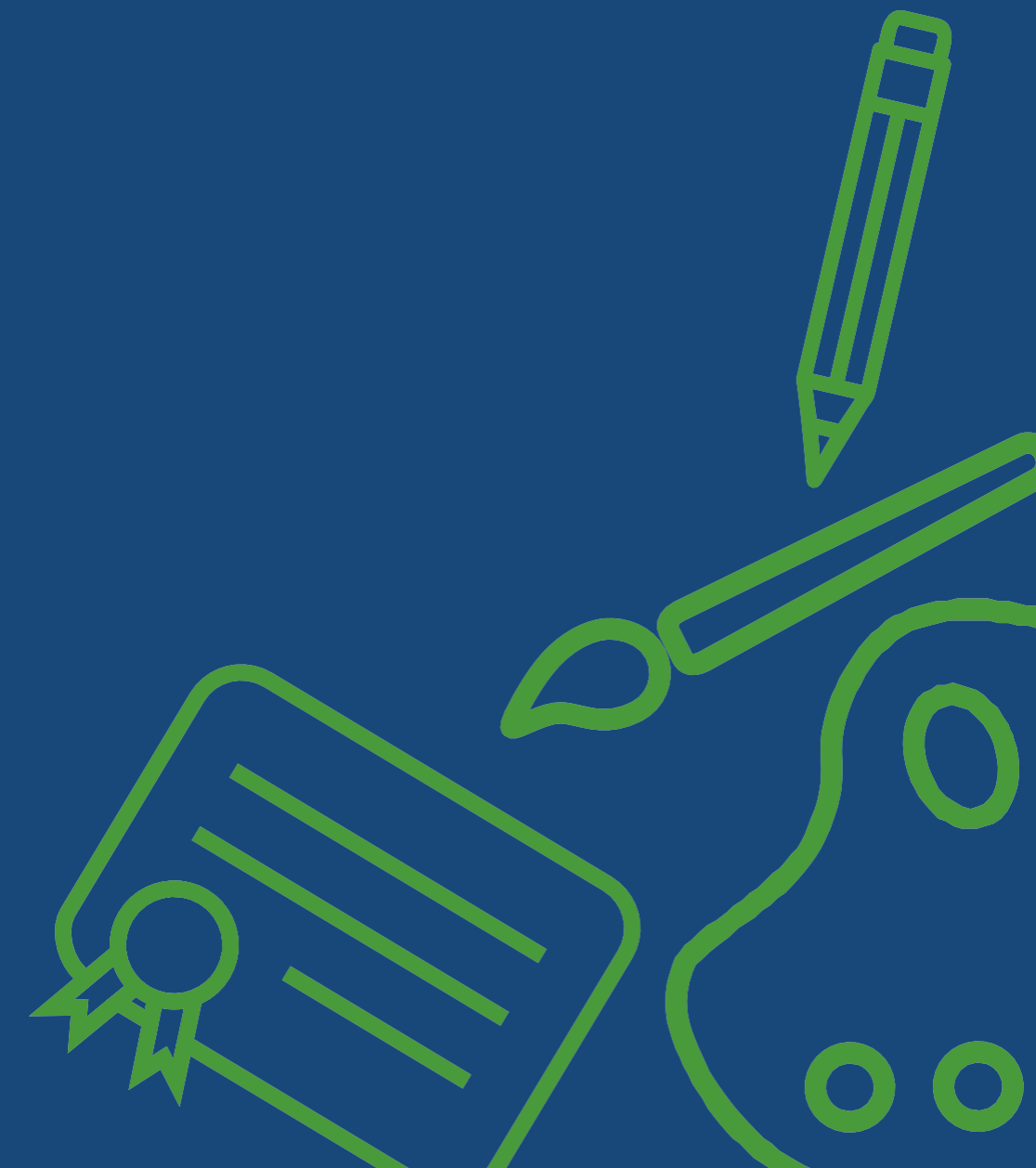
Available Monday - Friday / Term time

Breakfast Club - £5 per session

After-school Club - £12.50 per session



After School Clubs



After School Clubs

Start 2nd
week
back!

Monday

Science Club

FS2 – Y6

Miss Phillips and Miss
Roberts

Tuesday

Sports Club

FS2 – Y6

Miss Chantler and Mr
Fletcher

Art and Outdoor Club

FS2 – Y6

Mrs Prescott, Mrs
Rowbottom, Miss Rodgers

Thursday

Performing Arts

Y3-Y6


Mrs Martin, Miss Hanby and
Mrs Johnson

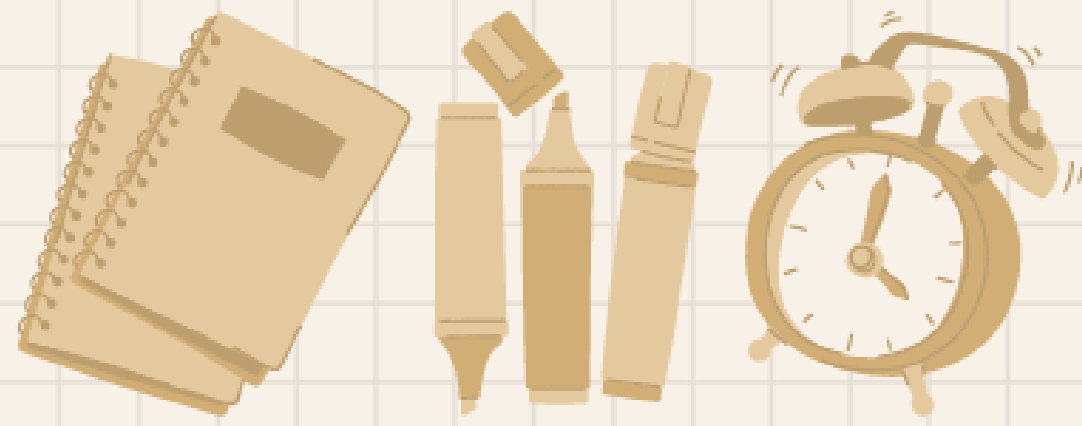
Choir/Young Voices will run during Wednesday
lunchtimes (with Mrs Milner)



Dates for your diary (including parental engagement)

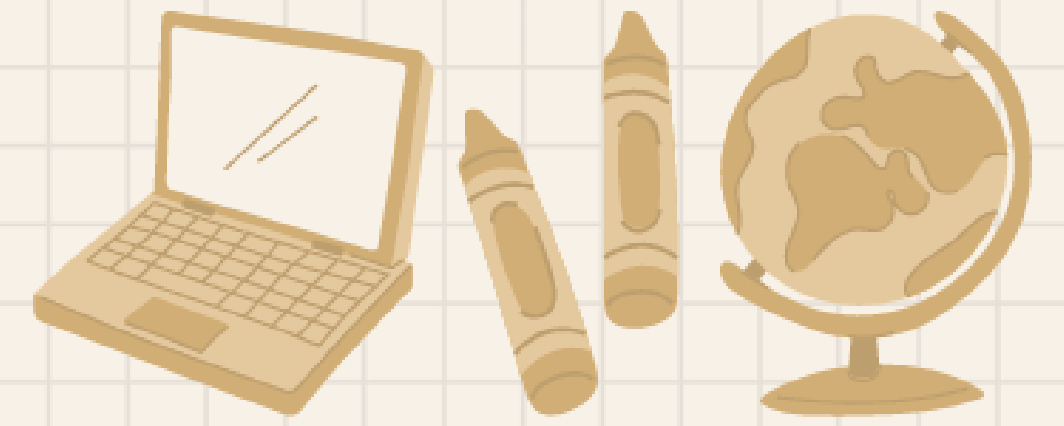
Primary Phase Yearly Calendar
- 2025-26.docx



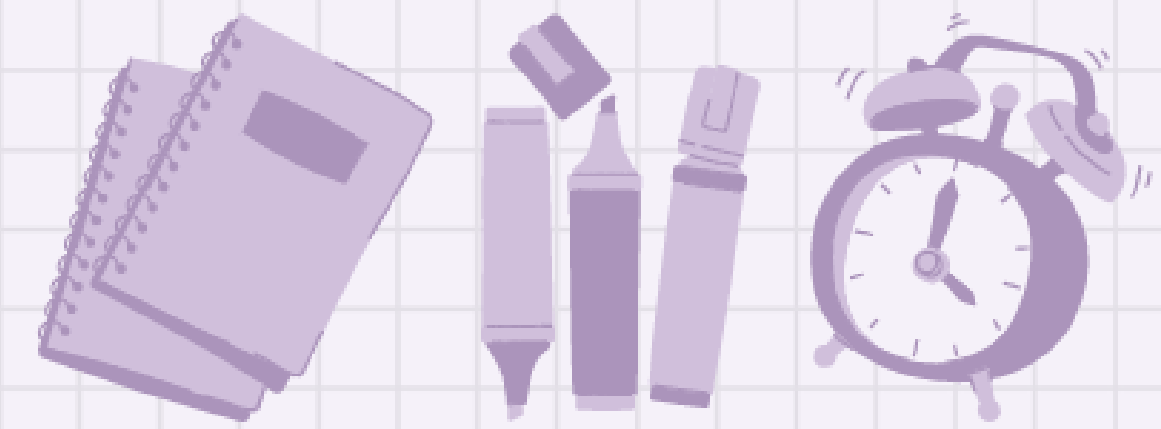


SEPTEMBER

2025

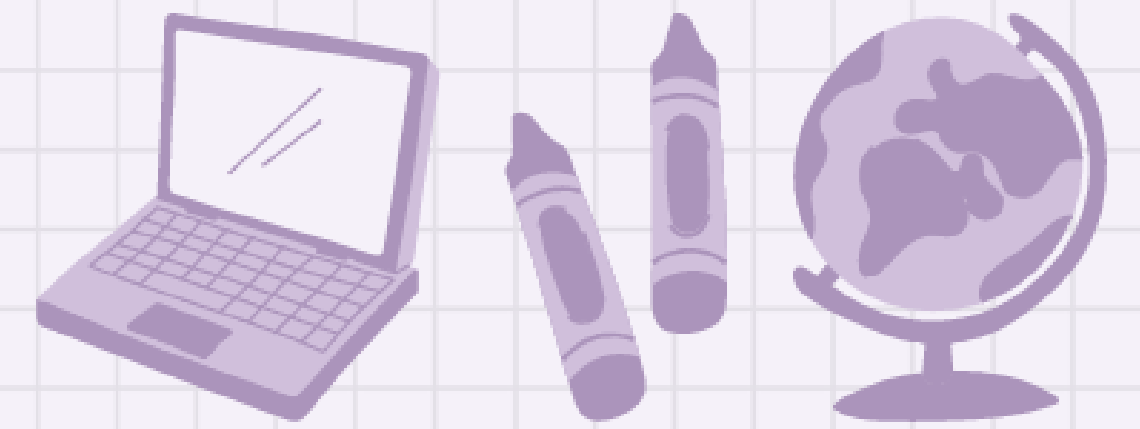


Sun	Mon	Tue	Wed	Thu	Fri	Sat
	1 INSET Day	2 Staggered Start- EYFS and Y6	3 Back to school (all year groups)	4	5	6
7	8	9	10 Y3 visit to Creswell Crag	11	12	13
14	15 Subject in the spotlight: Maths (8:30-9:30am)	16	17 Mobile Library in School	18 Y6 Visit to Crucial Crew	19	20
21	22	23	24	25 Y2 visit to Conisbrough Castle	26 Macmillan Coffee Morning + Stay and Learn event (8:30- 10:30am)	27
28	29 Y6 Bikeability Y6 Bikeability	30 Y6 Bikeability				

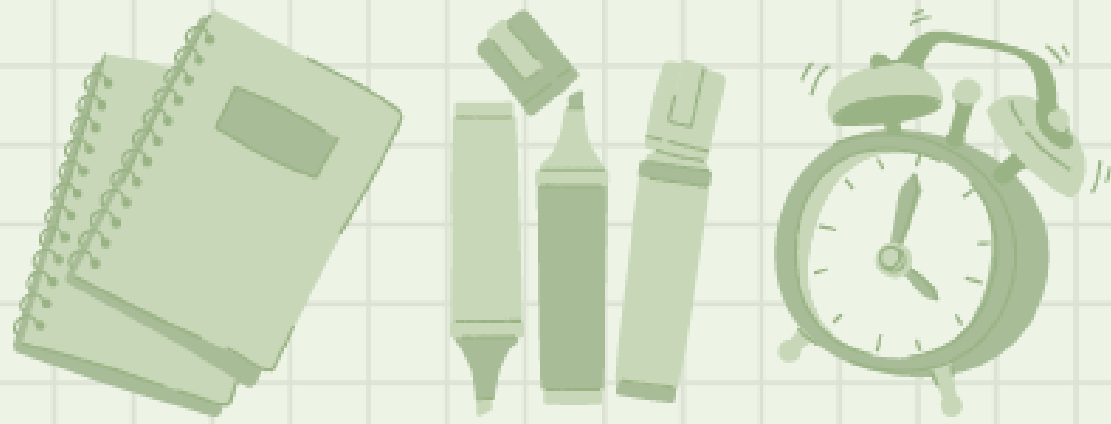


OCTOBER

2025

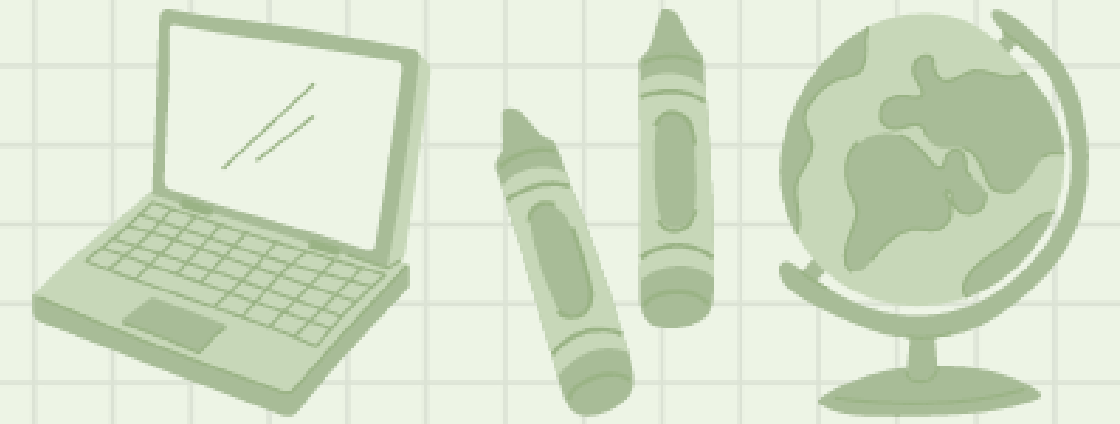


Sun	Mon	Tue	Wed	Thu	Fri	Sat
			1 Y6 Bikeability	2 Y6 Bikeability Y2 visit to Boston Castle	3 Y6 Bikeability	4
5	6 Start of Literary Festival Subject in the spotlight: English (8:30-9:30am)	7	8	9	10 FS2 – Y6 Flu Immunisations	11
12	13 Y2 Class Assembly (2:45- 3:15pm)	14 Y3 Class Assembly (2:45- 3:15pm)	15 Y1 Class Assembly (2:45- 3:15pm)	16 Y6 Class Assembly (2:45- 3:15pm)	17	18
19	20 Y4 Class Assembly (2:45- 3:15pm)	21 Y1 Space Workshop (in school) Y5 Class Assembly (2:45- 3:15pm)	22 Harvest Festival Assembly (2-3pm)	23 Break Up for half term	24 INSET Day	25
26	27	28	29	30		

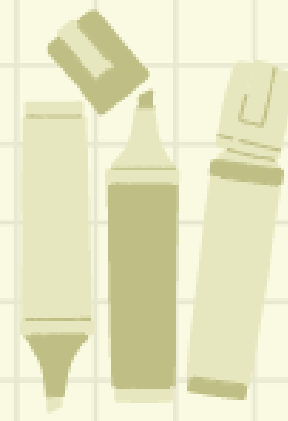
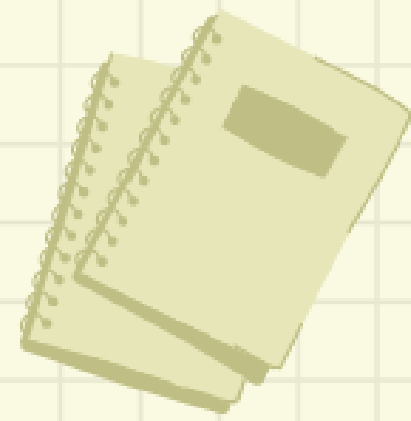


NOVEMBER

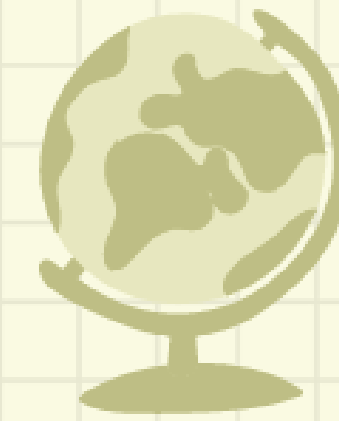
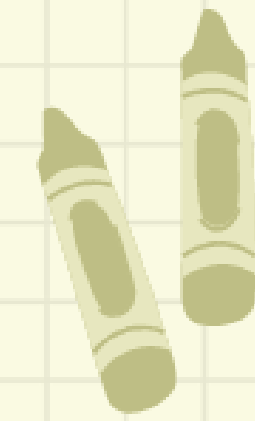
2025



Sun	Mon	Tue	Wed	Thu	Fri	Sat
30						1
2	3 Back to school	4 Phonics Stay and Learn	5 Bonfire Night	6	7	8
9 Remembrance Service	10	11 Remembrance Day	12	13 Subject in the spotlight: Science (2-3pm)	14	15
16	17	18	19 Y4/5 Visit to The Deep	20	21 Children In Need – Talent Show. Parents invited to attend (2-3pm). Christmas Light Switch On @ The Cavalier – 6:30pm	22
23	24	25	26	27	28	29



DECEMBER 2025



Sun	Mon	Tue	Wed	Thu	Fri	Sat
	1	2 Y6 @ Grammar Hub – Maya Day with an expert	3	4	5	6
7	8	9 Y1-3 Christmas Performance – (9-9:45am and 2:15-3pm)	10 EYFS Christmas Performance – 9-9:30am Parent's Evening (3:30-8pm)	11 Y4-6 Christmas Performance – (9-10:15am and 1:45-3pm)	12 Christmas Carol Service for Grandparents (a medley of songs from all performances). Y1-6 - Panto	13
14	15	16 EYFS Christmas Party	17 Y1/2 Christmas Party	18 Y3/4 Christmas Party	19 Y5/6 Christmas Party Break Up for Christmas	20
21	22	23	24	25	26	27
28	29	30	31			

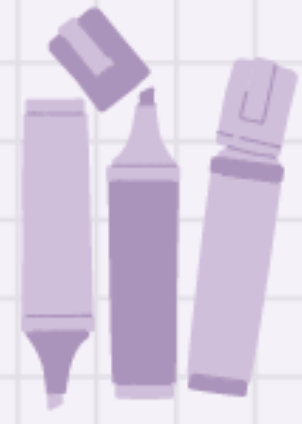


JANUARY

2026



Sun	Mon	Tue	Wed	Thu	Fri	Sat
				1	2	3
4	5 Back to school	6	7	8	9	10
11	12 Subject in the spotlight: PE (8:30-9:30am)	13	14	15	16	17
18	19	20	21	22	23	24
25	26	27	28	29	30	31



FEBRUARY 2026



Sun	Mon	Tue	Wed	Thu	Fri	Sat
1	2	3	4	5 Y6 at the Holocaust Museum	6 NSPCC – Number Day (Stay and Learn) – 8:30-10:30am	7
8	9	10 Subject in the spotlight: Art (2-3pm)	11 Young Voices	12 Break up for half term	13 INSET Day	14
15	16	17	18	19	20	21
22	23 Back to school	24 Y6 Class Assembly	25	26	27	28

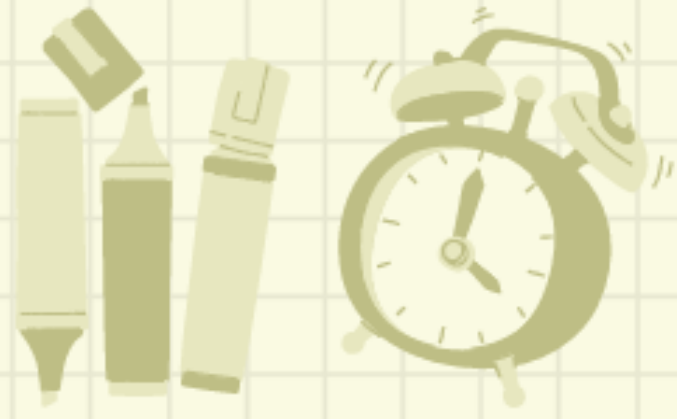


MARCH

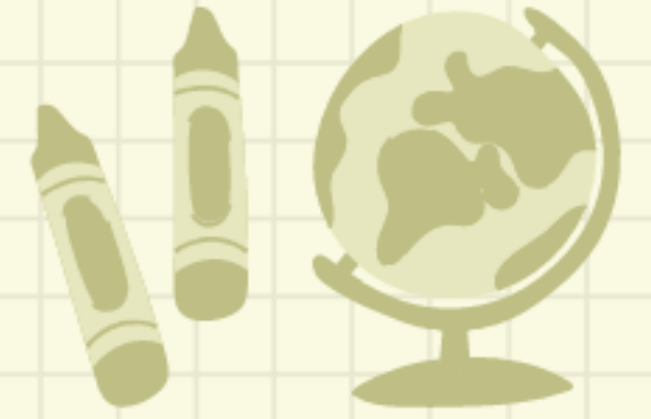
2026



Sun	Mon	Tue	Wed	Thu	Fri	Sat
1	2	3	4	5 Y2 visit to the Butterfly House	6	7
8	9 Y4 visit to Murton Park	10 Sublime Science in to launch Science Week	11	12	13	14
15	16	17	18	19	20 Reception children – walk to the woods	21
22	23 Y5 Bikeability	24 Y5 Bikeability	25 Y5 Bikeability	26 Y5 Bikeability	27 Y5 Bikeability Break up for Easter	28
19	30	31				



APRIL 2026



Sun	Mon	Tue	Wed	Thu	Fri	Sat
			1	2	3 Bank Holiday – Good Friday	4
5	6 Bank Holiday – Easter Monday	7	8	9	10	11
12	13 Back to School	14 Y4 Swimming	15	16	17	18
19	20 Y4 Swimming	21	22	23 Y2 – Great Fire of London experience (in school)	24	25
26	27 Y4 Swimming	28	29 Parent's Evening – 3:30- 8pm	30		

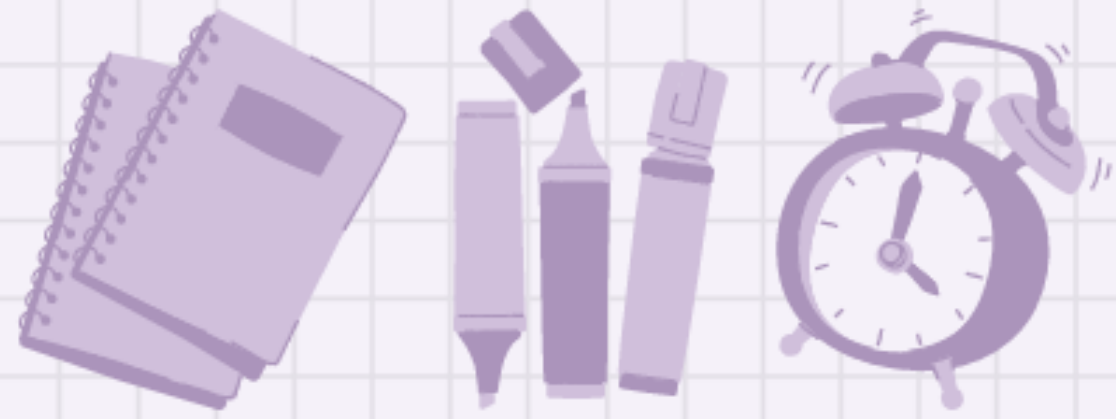


MAY

2026



Sun	Mon	Tue	Wed	Thu	Fri	Sat
					1	2
3	4 Bank Holiday – May Day	5 Y5 visit to the National Space Centre	6	7	8	9
10	11 SATs Week Y4 Swimming	12	13	14	15	16
17	18 Y4 Swimming	19	20 School Class Photos	21	22 Break up for half term	23
24	25 Bank Holiday	26	27	28	29	30

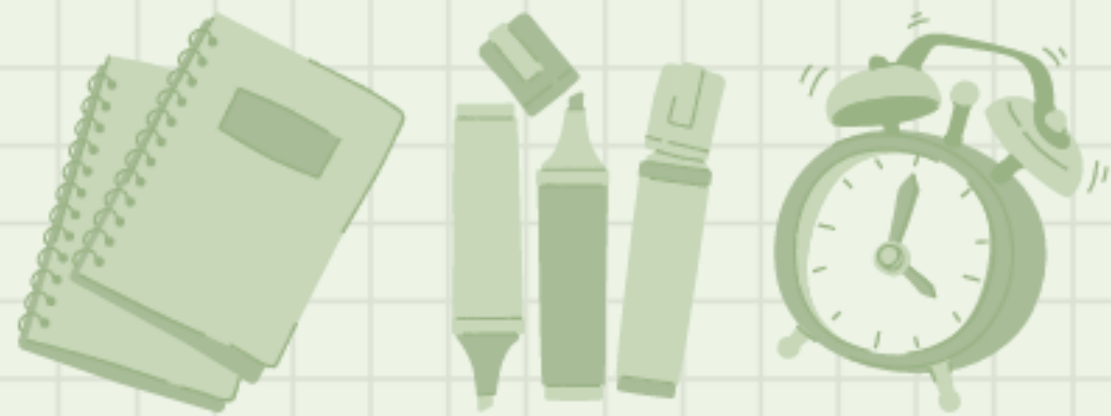


JUNE

2026



Sun	Mon	Tue	Wed	Thu	Fri	Sat
31	1 Back to School Y4 Swimming	2	3	4	5	6
7	8 Y4 Swimming	9	10	11	12	13
14	15 Y4 Swimming	16	17	18	19	20
21	22 Y4 Swimming	23 Sports Day – FS2- Y6 (weather permitted)	24	25	26 INSET Day	27
28	29 Y4 Swimming	30 Y1 visit to YWP Sports Day – FS1 (weather permitted)				



JULY

2026



Sun	Mon	Tue	Wed	Thu	Fri	Sat
			1	2 Y2 visit to Cleethorpes	3	4
5	6 Y4 Swimming	7 SATs results!	8	9	10	11
12	13 Y4 Swimming	14 Transition (3 full days)	15 Transition (3 full days)	16 Transition (3 full days + parent picnic event 2pm onwards)	17 Break up for Summer	18
19	20 INSET Day	21	22	23	24	25
26	27	28	29	30	31	

Dates for your diary

Autumn 1

3rd September – 24th October

Monday 2nd September – INSET Day

Tuesday 3rd September – Staggered Start (EYFS and Y6 in school)

Wednesday 4th September – Back to school (whole school)

Wednesday 10th September – Y3 visit to Creswell Crags

Friday 12th September – PTA event – non-uniform day – Roald Dahl Day

Monday 15th September – Subject in the Spotlight: Maths (parents are invited in – 8:30-9:30am)

Thursday 18th September – Y6 at Crucial Crew

Thursday 25th September – Y2 Conisbrough Castle

Friday 26th September – Macmillan Coffee Morning + Stay and Learn event (8:30-10:30am)

WC Monday 29th September – Y6 Bikeability

Thursday 2nd October – Y2 Boston Castle Visit

WC Monday 6th October – Literary Festival

Monday 6th October – Subject in the Spotlight: English (parents are invited in – 8:30-9:30am)

Friday 10th October – FS2-Y6 – Flu Immunisations

Tuesday 21st October – Y1 Space Workshop in school

Thursday 23rd October – Break up for half term

Friday 24th October – INSET

Monday 3rd November – Back to school

More dates to be announced. Please note some dates may need to change. However, this will hopefully give you an insight into the exceptional experiences we have planned for Autumn term 1.



Any questions?

