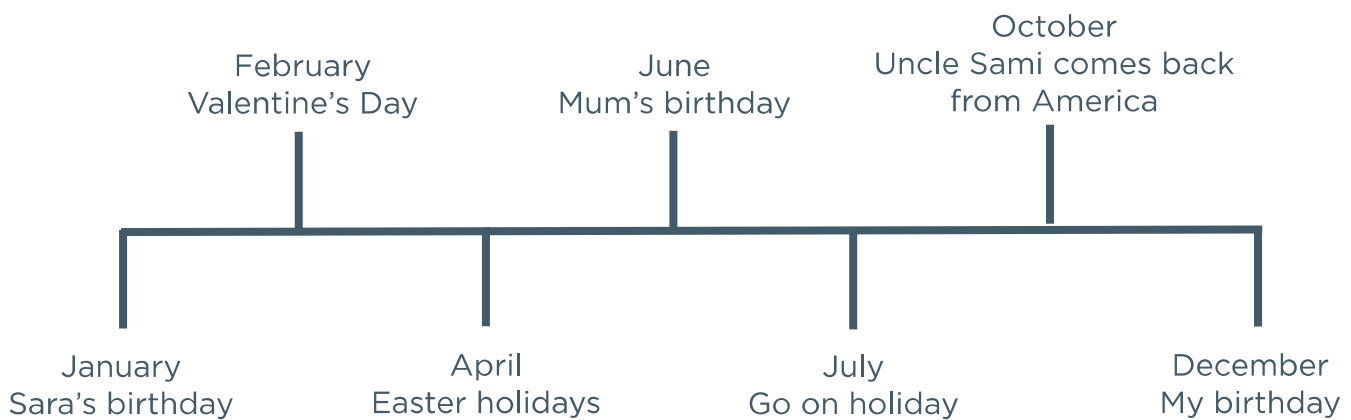


How many months are in a year? Which are the longest months?

Can you draw a year timeline and put in important dates for your family or school? If you put in a holiday or school holiday, how many days will it need?

Here is an example of someone's timeline:



Ask someone older in your family to make their year timelines with you.

Family comments:

Child comments:



Curriculum Link

Know the number of days in a month and months in a year.

Jungle expedition



Family Maths
Toolkit

Imagine you are on an expedition to the jungle. You come across a river which you have to cross. You and your friends swim across but you don't want to get your stuff wet. You set up a pull-line to get things over the river, but it will only take 5 kilograms of weight. You have to choose what food or drink you can pack into a bag which must weigh no more than 5 kg.

Look around your house and cupboards and decide what you would take – it cannot only be chocolate because you are in a jungle and must keep strong! What would other members of your family take?



Family comments:

Child comments:



Curriculum Link

Add and compare, add and subtract mass (g/kg); develop mathematical reasoning and ability to solve a range of problems.

Fireworks show



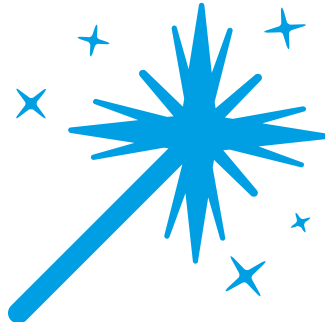
Family Maths
Toolkit

Jessica and Gurmit both want to let off some fireworks but they only have three so they agree that they will work out how many different ways they could share.

They have a fountain (F), a sparkler (S) and a rocket (R).

Can you help them complete this table:

Jessica	R							
Gurmit	S F							



Family comments:

Child comments:



Curriculum Link

Solve a given problem by organising and interpreting data in a simple table. Explain methods and reasoning.

Decorations light box



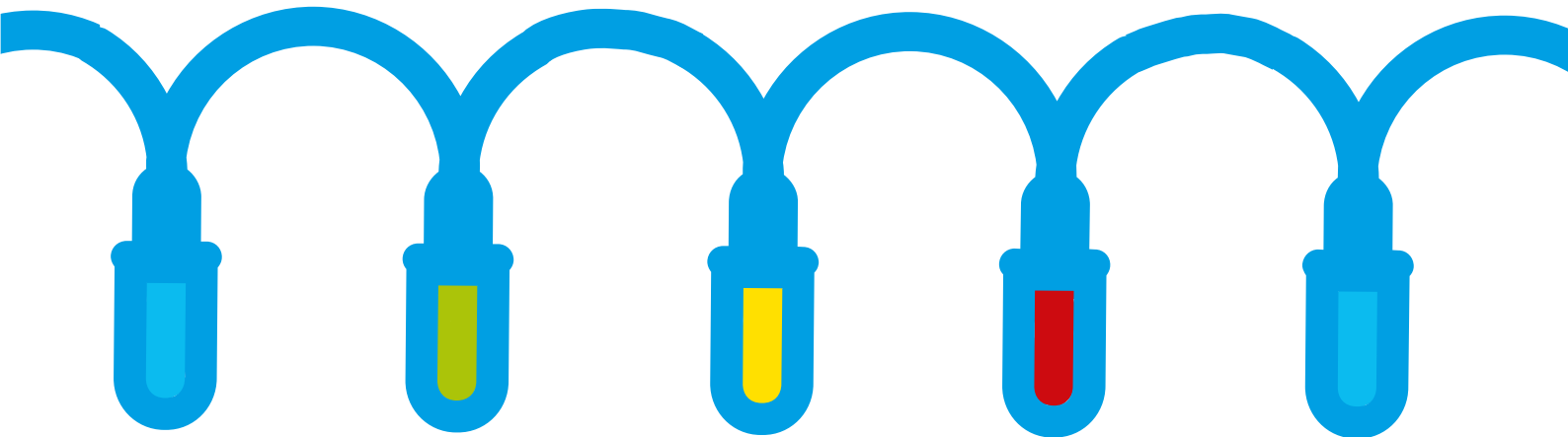
Family Maths Toolkit

The shop wants to design a new box for 36 Christmas lights – it will be a flat box. However only 4 colour lights will be used – red, gold, green and blue.

Can you design a flat box and arrange the lights so that no light of the same colour is adjacent to each other in any direction?

How many different designs can you find?

Can you try this for 24 lights?? Is it harder or easier?



Family comments:

Child comments:



Curriculum Link

Problem solving and working systematically.